



INTERNAL SENSORS

- **Ambient Temperature**
 - Range: -40°C to +70°C
 - Accuracy at 25°C: ±0.3°C
 - Accuracy over Full Range: ±1.4%FS
 - Measurement Resolution: 0.01°C
- **Humidity**
 - Range: 5% to 95% RH
 - Accuracy at 25°C ±2% RH
 - Accuracy over full range: ±3% RH
 - Measurement Resolution: 0.03% RH
- **Vibration**
 - Number of Axis (averaged together): 3
 - Max. Acceleration, each axis: ±2G
 - Offset Error: ±10%
 - Sensitivity Error: ±10%
 - Measurement Resolution: 0.006G
- **Acoustic Level**
 - Range: 0% to 100%
 - Resolution: 0.1%
- **Visible Light**
 - Range: 0% to 100%
 - Resolution: 0.1%

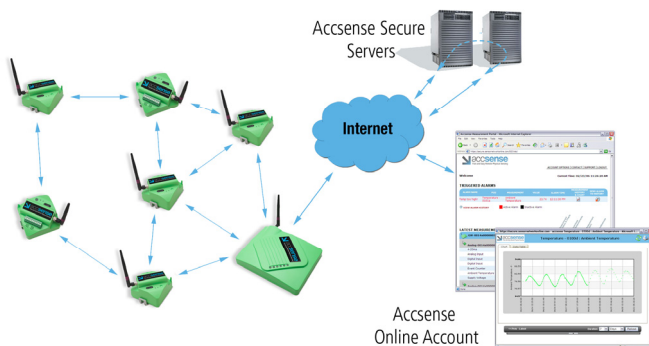
SENSOR INPUTS

- **4 to 20 mA Current Input with 20V Loop Supply**
 - Range: 0 to 20mA
 - Measurement Resolution: 0.058mA
 - Accuracy: ±0.29%FS
 - Loop Impedance: 120 Ohms
 - Settling time before measurement: 128ms
- **0-5V Analog Input w/ +5V Excitation Source**
 - Voltage Accuracy: ±4%
 - Maximum current: 25 mA
 - Settling time before measurement: 128ms
- **Counter/Totalizer (Digital Input 2)**
 - High Level Input Level (absolute maximum): 10V
 - High Level Input Level (minimum): 2.4V
 - Low Level Input (maximum): 0.5V
 - Max. Pulse Rate/Frequency: 2500 Hz
 - Min. Pulse Width/Contact Closure Time: 200µs
 - Input Impedance (input voltage <3.3V, contact closure): 20 KΩ
 - Input Impedance (input voltage >3.3V): 3.3 KΩ
 - Count Range: 2³² counts
 - (Event counter accumulates between server updates, then zeros.)
- **Contact Closure (Digital Input 1)**
 - High Level Input Level (absolute maximum): 10V
 - High Level Input Level (minimum): 2.4V
 - Low Level Input (maximum): 0.5V
 - Input Impedance (input voltage <3.3V, contact closure): 100 KΩ
 - Input Impedance (input voltage >3.3V): 3.3KΩ
 - Min. Pulse Width/Contact Closure Time: 12.5ms

The Model A1-01 Multi Purpose Wireless Sensor Pod is a component of the Accsense Remote Sensing Solution, which utilizes a variety of wireless Sensor Pods to take virtually any type of physical measurement and transmit it to a secure, web-based environment where different software tools may be used to store, manage, and interpret the data. For more information, visit www.accsense.com

GENERAL SPECS

- **Physical Size**
 - 3.5 in x 3.25 in x 2 in.
 - Weight: 8 oz.
- **Time Stamp**
 - Resolution: 1 second
 - Accuracy: ±1 seconds
- **Power Options**
 - 5V DC input power supply (provided)
 - And/or*
 - (3) AA Batteries (with low battery alarm)
- **Mounting Options**
 - Wall, pipe, or DIN rail (w/adaptor)



460 Ward Drive, Santa Barbara, CA 93111-2356

www.accsense.com