



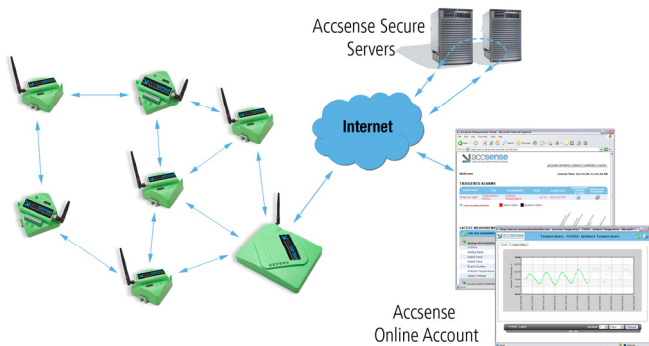
INTERNAL SENSORS

- **Ambient Temperature**
Range: -40°C to $+70^{\circ}\text{C}$
Accuracy at 25°C : $\pm 0.3^{\circ}\text{C}$
Accuracy over Full Range: $\pm 1.4\% \text{FS}$
Measurement Resolution: 0.01°C
- **Humidity**
Range: 5% to 95% RH
Accuracy at 25°C : $\pm 2\% \text{RH}$
Accuracy over Full Range: $\pm 3\% \text{RH}$
Measurement Resolution: $0.03\% \text{RH}$

GENERAL SPECS

- **Physical Size**
3.5 in x 3.25 in x 2 in.
Weighs 8 oz.
- **Time Stamp**
Resolution: 1 second
Accuracy: ± 1 seconds
- **Power Options**
5V DC input power supply (provided)
And/or
(3) AA Batteries (with low battery alarm)
- **Mounting Options**
Wall, pipe, or DIN rail (w/adaptor)

The Model A1-05 Atmospheric Wireless Sensor Pod is a component of the Accsense Remote Sensing System, which utilizes a variety of wireless Sensor Pods to take virtually any type of physical measurement and transmit it to a secure, web-based environment where different software tools may be used to store, manage, and interpret the data. For more information, visit www.accsense.com



460 Ward Drive, Santa Barbara, CA 93111-2356

www.accsense.com

Toll Free: 866.670.3500 • Tel: 805.681.3500 • Fax: 805.681.3501 • E-mail: info@accsense.com